

# 2020 Census and Redistricting



Jonathan Salt, F3 Law  
January 11, 2022

# What is the California Voting Rights Act (“CVRA”)?

- Took effect January 1, 2003
- Prohibits the use of “at-large” elections when such an election system:

*“impairs the ability of a protected class to elect candidates of its choice or its ability to influence the outcome of an election....”*

(Elections Code §14027.)



# What is a “By-Trustee Area” Election System?

- *Only safe harbor from a CVRA claim*
- School district is divided into trustee areas
- A governing board member is elected from each trustee area
- Board members are elected **by only the registered voters in the particular trustee area** where the governing board member resides



# Map Creation Considerations

## ■ Federal Requirements

### □ *Equal Population*

- As equal as practical based on data and criteria from most recent Census Total Population
- Within 10% variance between largest/smallest area

### □ *Minority Voting Rights*

- No Discriminatory Purpose; No Vote Dilution

### □ *Equal Protection*

- Race must not be a predominant factor

## ■ State Requirements

### □ Topography

### □ Geography

### □ Cohesiveness, Contiguity, Integrity, & Compactness of territory

### □ Community of Interest



# Election Transition History

- On September 27, 2017, Board of Education passed Resolution to do the following:
  - Initiate transition to by-trustee area election system
  - Stating intent of Board to file a General Waiver Request from CDE/SBE from the “election requirement”
- Pre-Map Public Hearings:
  - October 12, 2017
  - October 19, 2017
- Map Public Hearings and Community Meetings:
  - November 16, 2017
  - November 28, 2017
  - December 14, 2017
  - November 13, 2017
  - November 14, 2017

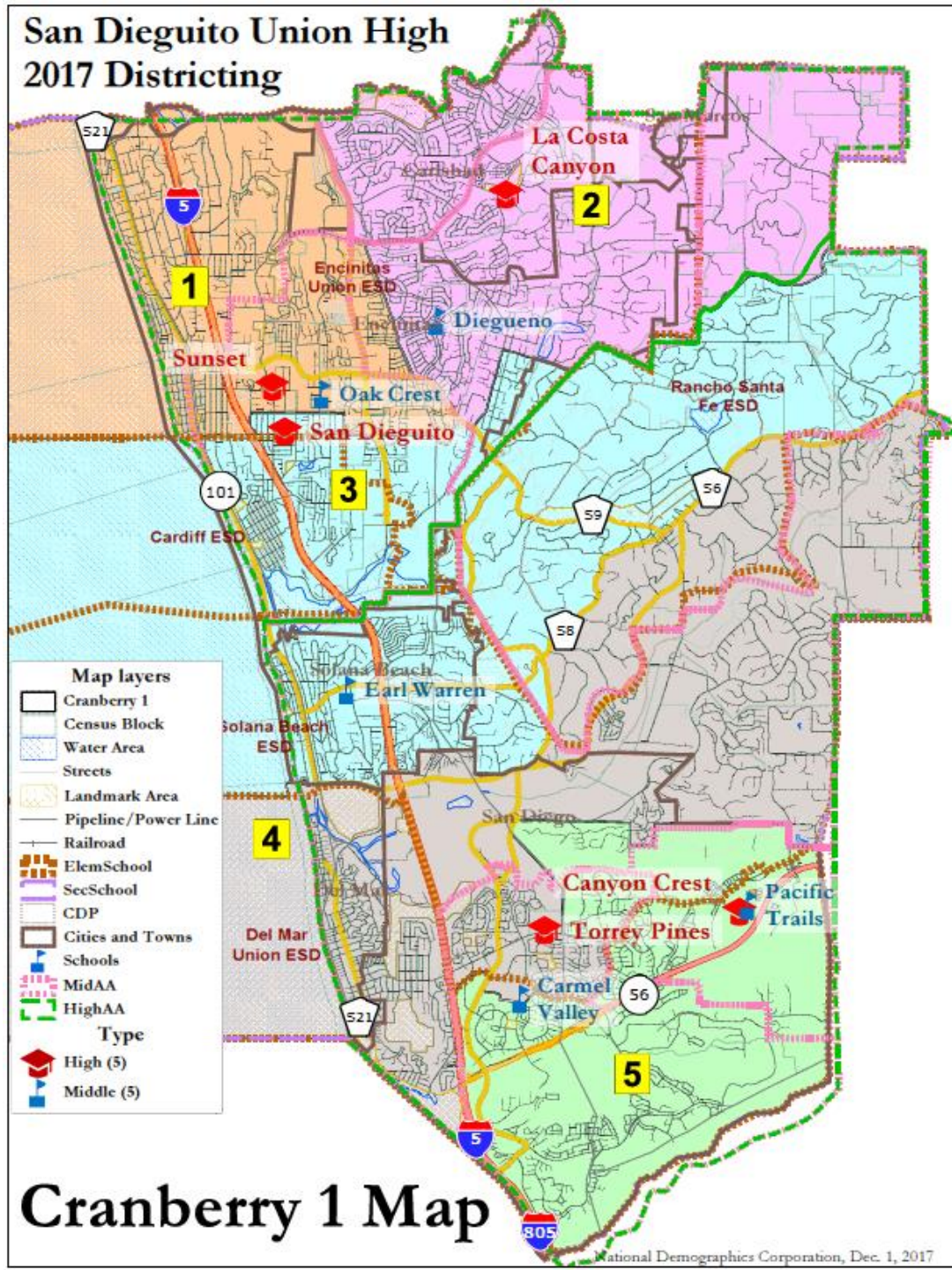


# Election Transition History

- December 14, 2017:
  - Board approval of current Map
- Spring 2018:
  - County Committee on School District Organization approves District's transition
- November 2018:
  - District use of current Map in Governing Board elections



# Current Trustee Area Map



# Impact of Census

- Once transition made to by-trustee area election system, then following each federal census:
  - Governing board must approve adjustment of trustee area boundaries to make sure each the population in each trustee area is as nearly as equal as practical, among other things.
  - By 3/1/22



(Education Code section 5019.5(a).)







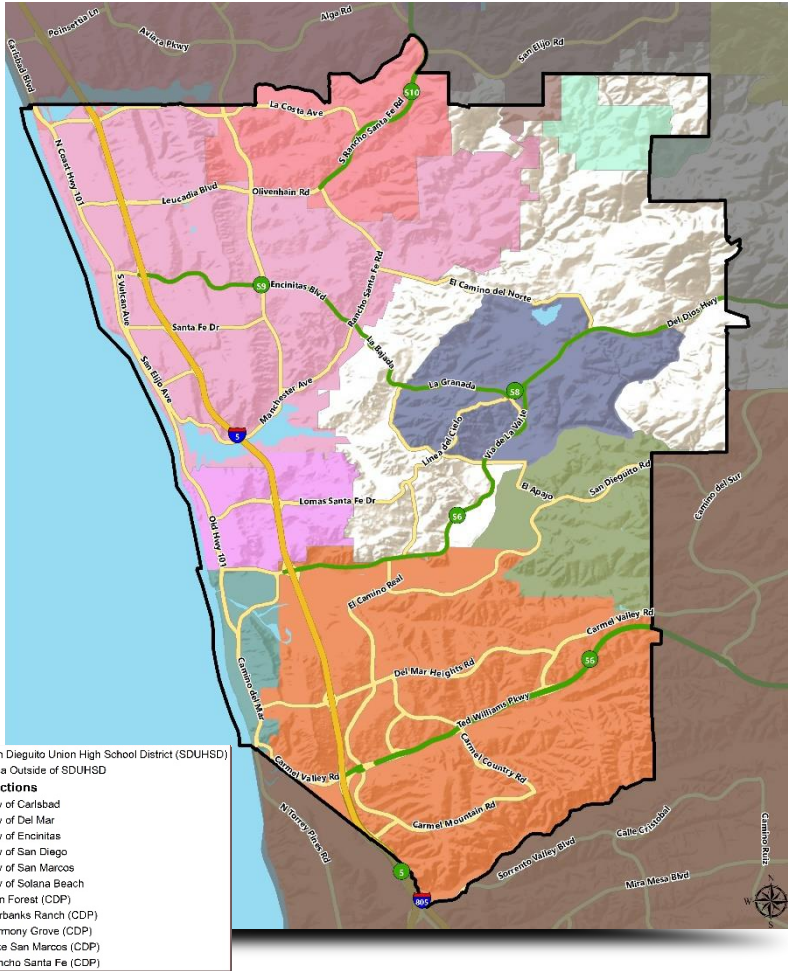
► DISTRICT DEMOGRAPHICS  
**2020 CENSUS DATA**

- Validated redistricting data was finalized by the California Department of Finance on September 27, 2021.
- This data showed substantial changes in the area served by San Dieguito Union High School District (“SDUHSD”) from 2010 to 2020, including:
  - Overall population growth of 17,530 (10.6%)
  - Total Variance of 27.9% based on 2020 Census (*Out of Compliance*)

Trustee Area	2010 Census		2020 Census		Change	
	Total	Variance	Total	Variance	Population	Percent
Trustee Area 1	32,920	-0.9%	34,548	-5.9%	1,628	4.9%
Trustee Area 2	33,240	0.1%	35,773	-2.6%	2,533	7.6%
Trustee Area 3	33,193	-0.1%	34,321	-6.5%	1,128	3.4%
Trustee Area 4	33,386	0.5%	34,382	-6.4%	996	3.0%
Trustee Area 5	33,330	0.3%	44,575	21.4%	11,245	33.7%
<b>Total Population</b>	<b>166,069</b>	<b>1.4%</b>	<b>183,599</b>	<b>27.9%</b>	<b>17,530</b>	<b>10.6%</b>

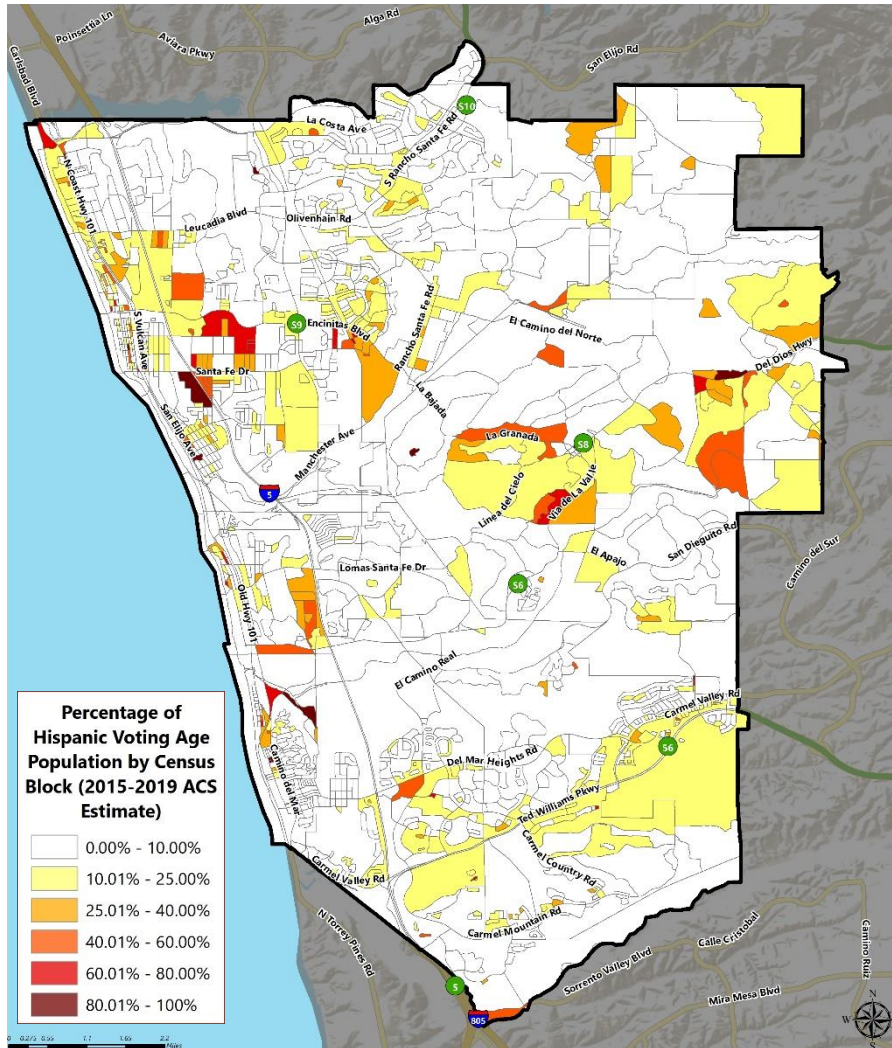
# ► DISTRICT DEMOGRAPHICS

## 2020 CENSUS DATA



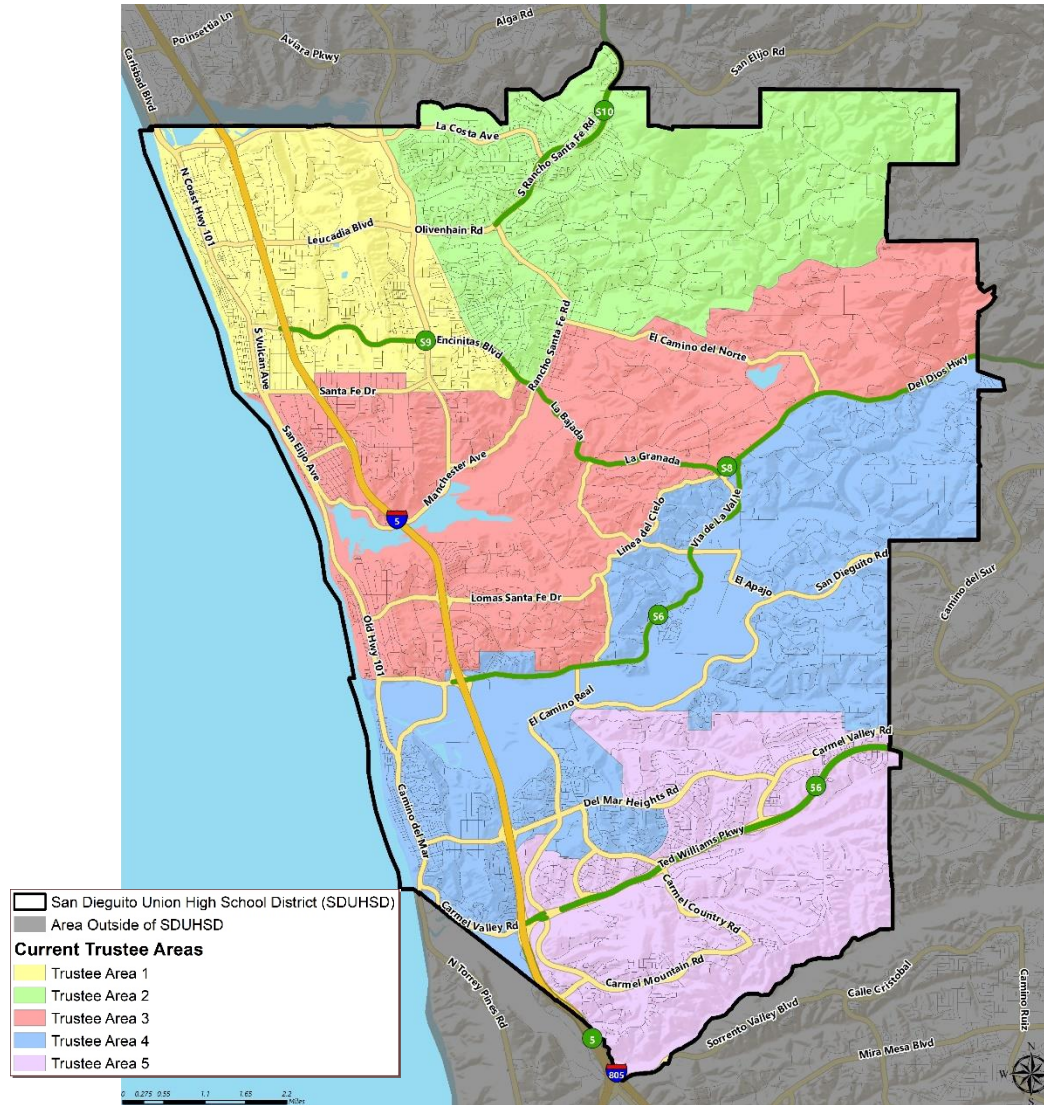
Population	Total Population		Age 18 and over	
	Total	%	Total	%
Hispanic/Latino	20,937	11.4%	14,904	10.4%
White	123,436	67.2%	100,533	70.3%
Black / African American	1,323	0.7%	1,034	0.7%
American Indian /Alaska Native	255	0.1%	206	0.1%
Asian	25,811	14.1%	19,360	13.5%
Native Hawaiian/ Pacific Islander	180	0.1%	138	0.1%
Other	1,120	0.6%	816	0.6%
Two or More Races	10,537	5.7%	6,105	4.3%
<b>Total</b>	<b>183,599</b>	<b>100%</b>	<b>143,096</b>	<b>100%</b>

► DISTRICT DEMOGRAPHICS  
CITIZEN VOTING AGE POPULATION ESTIMATES



Population	2015-2019 CVAP	
	Total	%
Hispanic/Latino	11,220	8.8%
White	99,029	78.1%
Black / African American	1,144	0.9%
American Indian / Alaska Native	331	0.3%
Asian	12,551	9.9%
Native Hawaiian/ Pacific Islander	113	0.1%
Two or More Races	2,442	1.9%
<b>Total</b>	<b>126,830</b>	<b>100%</b>

► CURRENT TRUSTEE AREAS



## ► CURRENT TRUSTEE AREAS

Census 2020 Total Population:	183,599		Ideal Trustee Area Size:	36,720		Total Variance:	27.9%			
TRUSTEE AREA	Trustee Area 1		Trustee Area 2		Trustee Area 3		Trustee Area 4		Trustee Area 5	
TP* vs. CVAP**	TP	CVAP	TP	CVAP	TP	CVAP	TP	CVAP	TP	CVAP
Population	34,549	26,779	35,773	25,739	34,320	26,421	34,380	22,869	44,577	25,022
Population Variance	-5.9%	N/A	-2.6%	N/A	-6.5%	N/A	-6.4%	N/A	21.4%	N/A
Hispanic/Latino	15.8%	10.9%	10.7%	8.3%	13.9%	9.7%	8.2%	6.9%	9.1%	8.1%
White	72.9%	82.0%	75.2%	83.1%	75.7%	84.0%	68.1%	78.4%	49.3%	62.3%
Black/African American	0.5%	0.6%	0.7%	0.8%	0.5%	1.0%	0.7%	1.6%	1.1%	0.7%
American Indian/Alaska Native	0.2%	0.2%	0.1%	0.3%	0.2%	0.1%	0.1%	0.0%	0.1%	0.7%
Asian	4.3%	4.7%	6.3%	5.4%	4.1%	3.9%	16.7%	10.6%	33.4%	25.9%
Native Hawaiian/Other Pacific Islander	0.1%	0.1%	0.1%	0.3%	0.1%	0.0%	0.1%	0.0%	0.1%	0.0%
Other	0.6%	N/A	0.6%	N/A	0.7%	N/A	0.8%	N/A	0.5%	N/A
Two or More Races	5.6%	1.5%	6.3%	1.9%	4.8%	1.4%	5.4%	2.6%	6.4%	2.4%

\*Total Population; Source: Redistricting Database for California, Published by Statewide Database on September 20, 2021

\*\*Citizen Voting Age Population (CVAP); Source: American Community Survey, 2015-2019 Data

\*\*\*May not sum exactly due to rounding.



QUESTIONS

A row of yellow school buses is parked in a grassy field under a cloudy sky. The buses are slightly out of focus, and the overall image has a dark, semi-transparent overlay. A large, stylized, semi-transparent letter 'S' graphic is centered over the image, with the word 'QUESTIONS' written in white capital letters across its middle.